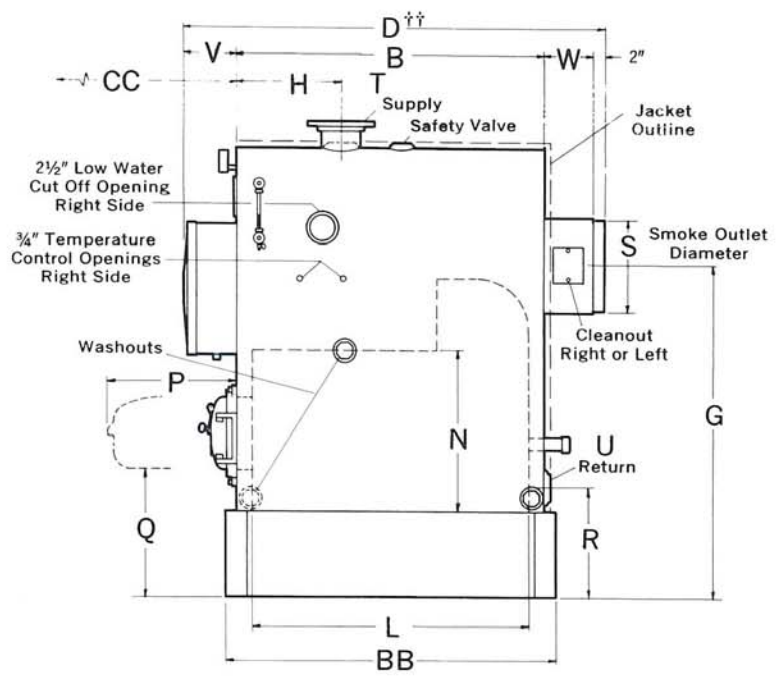
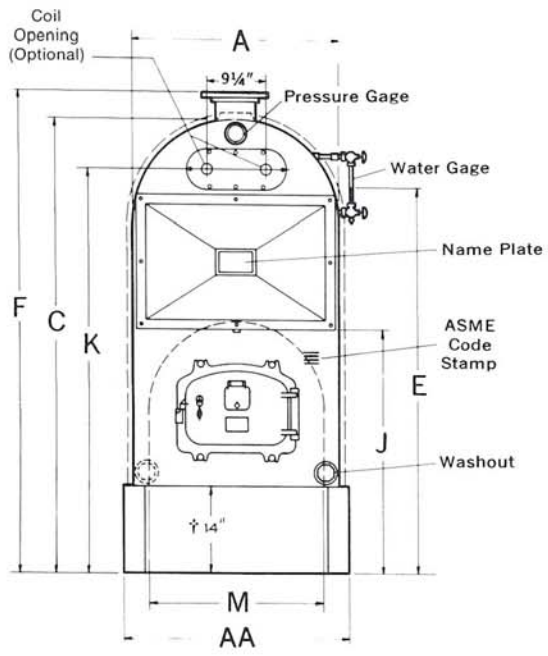




KEWANEE  
TYPE "R" BOILER



BOILER NUMBER	3R1	3R2	3R3	3R4	3R5	3R6	3R7	3R8	3R9	3R10	3R11	3R12
A — Boiler Width Overall	30½	30½	30½	30½	35	35	35	35	41½	41½	41½	41½
B — Boiler Length	30½	36½	42½	48½	42½	50½	58	67	56½	64½	72	79½
C — Boiler Height	65½	65½	65½	65½	73	73	73	73	82	82	82	82
D — Boiler Length Overall	48½	54½	60½	66½	61½	69½	77	86	77½	85½	93	100½
E — Water Line Height	55½	55½	55½	55½	62½	62½	62½	62½	70½	70½	70½	70½
F — Steam or Water Supply Height	66½	66½	66½	66½	73½	73½	73½	73½	86	86	86	86
G — Smoke Outlet Height	46½	46½	46½	46½	51½	51½	51½	51½	58	58	58	58
H — Steam or Water Supply	10	12	14	16	14	17	19	22	16	18	20	24
J — Floor to bottom of smokebox	34½	34½	34½	34½	39	39	39	39	44½	44½	44½	44½
K — Coil Connection Height (Optional)	57½	57½	57½	57½	64½	64½	64½	64½	72½	72½	72½	72½
L — Firebox—Length	25½	31½	37½	43½	37½	45	53	62	51	59	66½	74
M — —Width	24	24	24	24	28	28	28	28	35	35	35	35
N — —Height	21½	21½	21½	21½	26	26	26	26	31	31	31	31
P — Opened Firedoor to Boiler	21½	21½	21½	21½	21½	21½	21½	21½	21½	21½	21½	21½
Q — Floor to bottom of Firedoor	19½	19½	19½	19½	21	21	21	21	21½	21½	21½	21½
R — Return Height	17½	17½	17½	17½	18	18	18	18	18	18	18	18
S — Smoke Outlet Diameter	12	12	12	12	15	15	15	15	18	18	18	18
T — Steam Supply Size	4	4	4	4	4	4	4	4	6**	6**	6**	6**
U — Return Size	3	3	3	3	4	4	4	4	4	4	4	4
V — Front Smokebox Depth	8	8	8	8	9	9	9	9	10	10	10	10
W — Rear Smokebox Depth	8	8	8	8	8	8	8	8	9	9	9	9
—Standard Rear Outlet	12½	12½	12½	12½	14½	14½	14½	14½	16½	16½	16½	16½
—Oval Top Outlet	8	8	8	8	8	8	8	8	9	9	9	9
AA—Base—Width	32½	32½	32½	32½	36½	36½	36½	36½	44	44	44	44
BB— —Length	34½	40½	46½	52½	46½	54½	62	71	60	68	75½	83
CC—Tube Replacement Space	31½	37½	43½	49½	43½	51½	59	68	57½	65½	73	80½
Chimney—Diameter	10	11	12	12	13	14	15	16	16	17	18	18
—Height	30	35	35	40	35	40	40	45	35	40	45	50
Outside Surface to Cover	38	43	48	53	58	65	73	82	82	90	99	107
Approximate Weight, Unjacketed	1500	1650	1800	1950	2250	2475	2725	3000	3375	3650	3850	4200

\*\*150 Lb. ANSI Flange. Eight ¾ in. bolts, 9½ in. bolt circle.  
 †Other base heights change vertical dimensions C, E, F, G, J, K, Q and R.  
 ††Add for increased length if top smoke outlet used. See dimension "W".



For parts or job-specific technical data contact:  
**OEM Boiler Parts**  
 Phone: (717) 367-9900  
[sales@oemboilerparts.com](mailto:sales@oemboilerparts.com)