

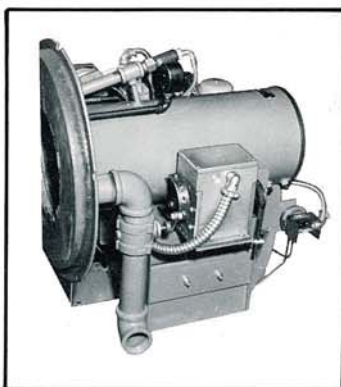




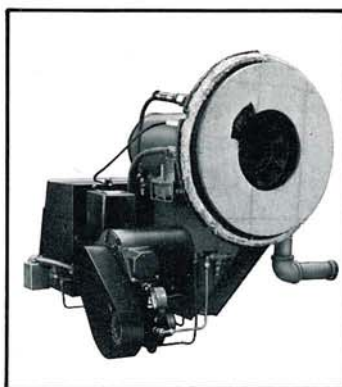




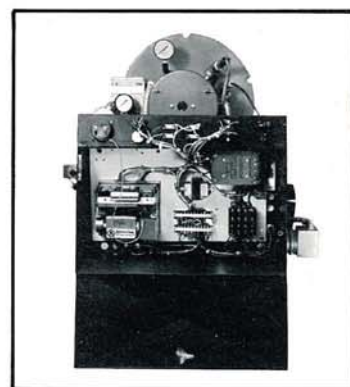
Cam-operated metering valve accurately controls the firing rate for all modulating burner units.



Delicate flame scanner is protected from heat by a special air-cooling system, another Kewanee development.



Cerafelt facing protects the gas manifold from refractory heat and reduces the temperature of the mounting plate.

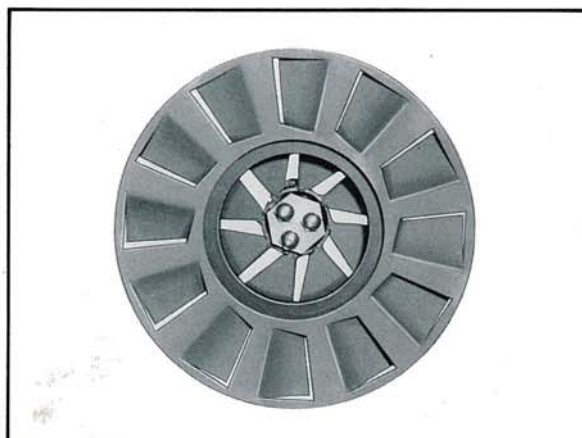


A typical control cabinet, where locking, dust-right door encloses and protects controls. All color-coded circuits are easily accessible if adjustments are required.

Standard Kewanee gas train with plug gas cock, gas pressure regulator, automatic gas valve, independent automatic safety gas valve (over 1 million BTU/hr.), gas volume control valve and pressure gauge. Exceeds U.L. requirement.



Kewanee's special power-pack, easily removable as a single unit for servicing. Front-drive fan wheel and rear-drive oil pump are driven by same motor.



Double-action swirl-vane diffusers give better air/oil mixture. Special nozzle in center offers superior atomization, while inner zone and outer zone diffusion provides optimum combustion mixture.