

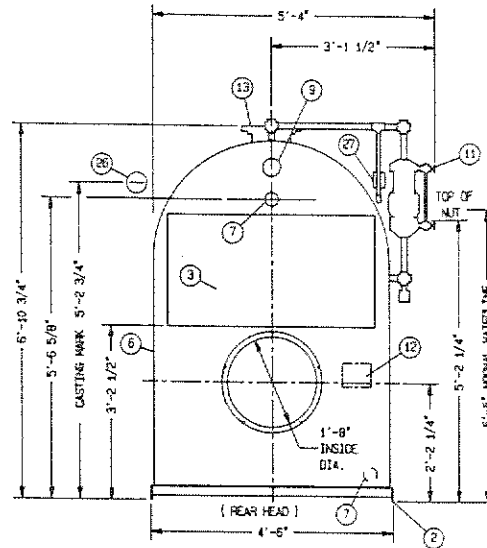
BOILER SPECIFICATIONS :

CONSTRUCTION :
WELDED , ASME BPV CODE , SECTION IV

MAX. ALLOWABLE WORKING PRESS. (STEAM) --- 15 PSIG
HYDROSTATIC TEST PRESS. --- 60 PSIG
RATINGS --- HORSEPOWER --- 100 BHP
MEH OUTPUT --- 3348 MEH
STEAM (FROM 6" Ø 212' F) --- 3450 LBS/HR
STEAM (GROSS OUTPUT) --- 13950 SQ FT
RADIATION
STEAM (MCA NET) --- 10489 SQ FT
RADIATION
FIRING RATE --- GAS (1000 BTU/CF) --- 4185 CFH
OIL (140000 BTU/GAL) --- 29.9 GPH
HEATING SURFACE (FIRESIDE) --- 418 SQ FT
FURNACE VOLUME --- 66.0 CU FT
SHIPPING WEIGHT - APPROX --- 7200 LBS
FLOODED WEIGHT - APPROX --- 11114 LBS

STANDARD BOILER FEATURES :

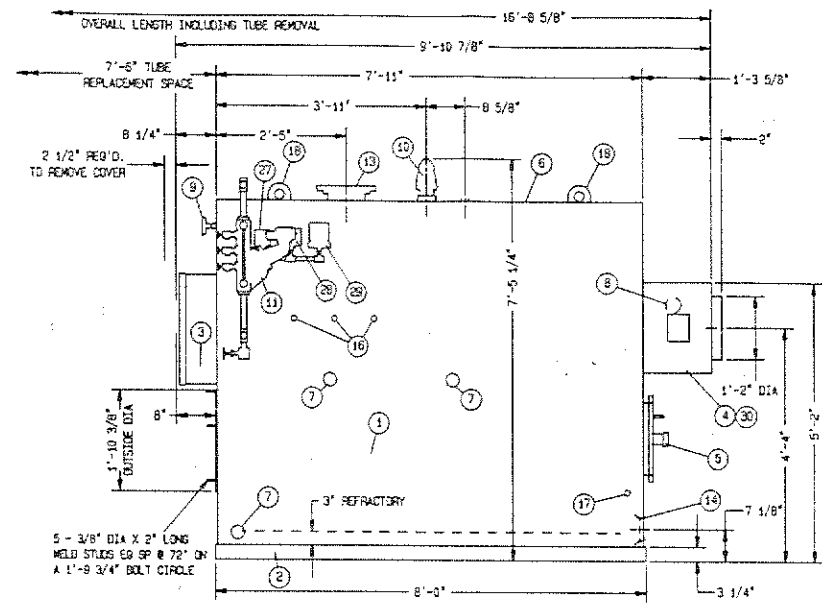
- 1 THREE PASS ASME CODE BOILER WITH 2' FIRETUBES, DESIGNED FOR FORCED DRAFT OPERATION
- 2 SKID-TYPE BASE WITH REFRACTORY FLOOR
- 3 GAS-TIGHT INSULATED FRONT FLUEBOX WITH BOILER DATA PLATE ON THE COVER, AND 1/2" DRAIN CONNECTION ON BOTTOM
- 4 GAS-TIGHT REAR FLUEBOX WITH REAR OUTLET, CLEANOUT OPENING ON RIGHT SIDE, AND 1/2" DRAIN CONNECTION ON BOTTOM
- 5 16" ROUND REAR ACCESS OPENING, REFRACTORY LINED, WITH A 2" PYREX OBSERVATION PORT
- 6 WRAP-AROUND, INSULATED, 22 GA STEEL JACKET
- 7 9 - 1 1/2" PLUGGED WASHOUT/INSPECTION OPENINGS (WITH SOCKET WRENCH - SL)
- 8 FLUE GAS THERMOMETER - 150-750°F - LEFT SIDE REAR FLUEBOX - 3" STD OR 5" OPTIONAL - SL
- 9 3 1/2" COMPOUND PRESSURE GAUGE, 30"HG/30PSIG
- 10 2 1/2" CONERACO FIG #12-206 SAFETY RELIEF VALVE SET AT 15 PSI, WITH A 2 1/2" SIDE OUTLET, TOTAL RELIEVING CAPACITY OF 3529 LBS/HR - SL
- 11 McDONNELL & MILLER NO 157-R COMBINATION WATER COLUMN, PUMP CONTROL, LOW WATER CUT-OFF, & ALARM SW. (WITH WATER GAUGE GLASS - SL)
- 12 ASME CODE STAMP - FRONT HEAD
- 13 8" - 150# ANSI FLANGED SUPPLY CONNECTION WITH 8 - 7/8" HOLES ON A 11 3/4" BOLT CIRCLE, ALSO WITH BAFFLE, TOP C/L
- 14 4" FPT RETURN CONNECTION, C/L REAR HEAD
- 15 1" PLUGGED EQUALIZER OPENING, FRONT LEFT SIDE



- 16 3 - 3/4" PLUGGED OPENINGS, RIGHT SIDE
- 17 3/4" PLUGGED OPENING, LOWER REAR RIGHT SIDE
- 18 TWO LIFTING LOOPS, TOP C/L

OPTIONAL BOILER FEATURES :

- 26 McDONNELL & MILLER BG-M SECOND LOW WATER CUT-OFF, WITH ALARM SW., MANUAL RESET - SL
- 27 HONEYWELL PA404A HIGH LIMIT CONTROL
- 28 HONEYWELL L404A OPERATING CONTROL
- 29 HONEYWELL PA404A HI-LOW CONTROL



NOTE: ALL LISTED STD. & OPTIONAL EQUIP. IS MOUNTED, PIPED, WIRED, & READY FOR FIELD HOOKUP, EXCEPT FOR ITEMS INDICATED BY SL. (INDICATES THEY ARE SHIPPED LOOSE)

PROJECT : ST. JOHN'S ACADEMY

LOCATION : KANSAS CITY, MO

SALES ORDER NO : 833911

CUSTOMER ORDER NO : 21272

DRAWING APPROVAL AND SUBSEQUENT CHANGES
This drawing is submitted to you for your final approval.
Upon receipt of your approval the parts of the equipment will be detailed, special components will be purchased and bills of material and final drawings distributed to all manufacturing departments.
Changes made by you after such approval will result not only in production delays but also in added cost. We therefore ask that you exercise caution when approving this drawing so that your approval will reflect your exact requirements.

E		
D		
C		
B		
A		
NO	REVISION	DATE
THIS DOCUMENT CONTAINS MATERIAL AND/OR INFORMATION WHICH IS THE PROPERTY OF KEWANEE BOILER COMPANY, INC. AND SUPPLIED ONLY ON CONFIDENTIAL BASIS. NO TRANSMITTAL OR DISCLOSURE SHALL BE MADE TO ANY PERSON, FIRM OR CORPORATION WITHOUT PRIOR WRITTEN APPROVAL OF KEWANEE BOILER COMPANY, INC.		
MADE	DATE	CHEK'D
PK	6-16-92	
SCALE		

KEWANEE
101 Franklin Street, Kewanee, Illinois 61442

KEWANEE K-4.5-418-KX
SQUARE HEAT GENERATOR
GAS OR OIL FIRED -- 15# STEAM

SIZE	QWD NO	REV
MB	48171	