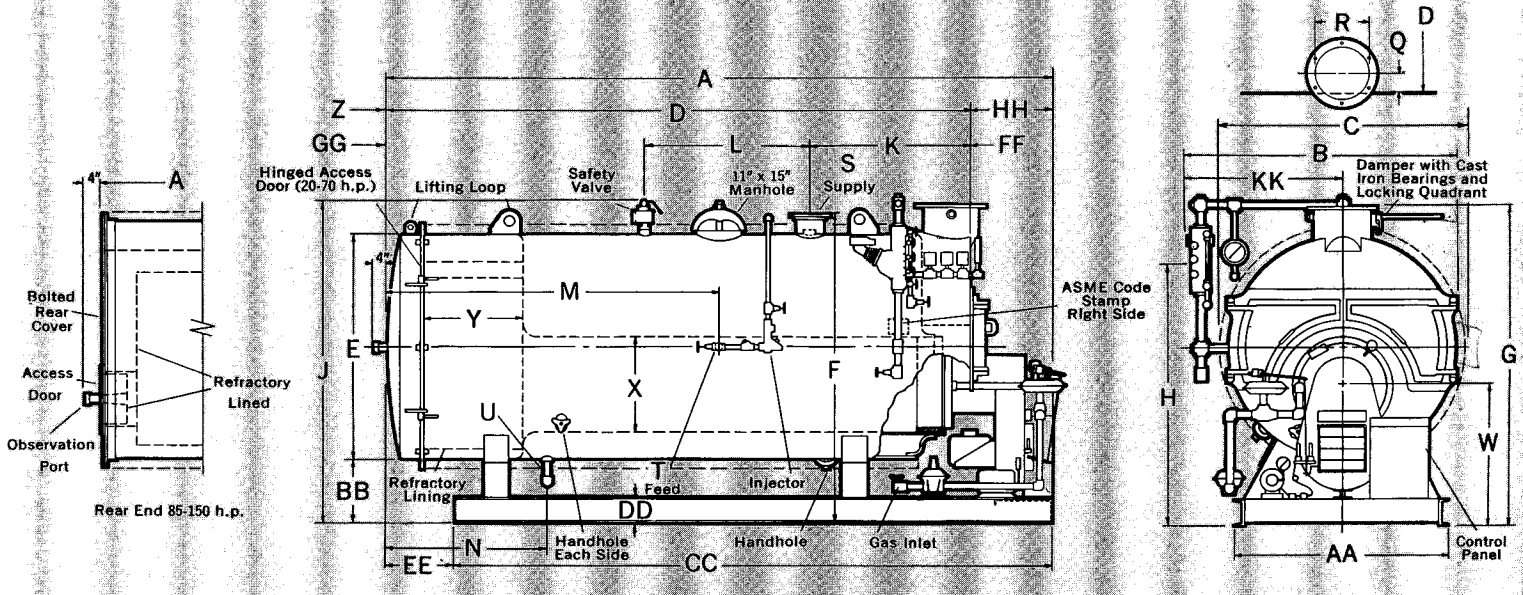


# KEWANEE scottie junior high pressure units



UNIT NUMBER	HX-20	HX-30	HX-40	HX-50	HX-60	HX-70	HX-85	H-100	H-125	H-150
Rating—horsepower	20	30	40	50	60	70	85	100	125	150
—MBh	672	1008	1344	1680	2016	2352	2856	3360	4200	5040
—steam per hour, 212°F	690	1030	1380	1720	2070	2410	2932	3450	4310	5170
—steam radiation	2800	4200	5600	7000	8400	9800	11900	14000	17500	21000
Firing rate—oil, 140,000 Btu	6.0	9.0	12.0	15.0	18.0	21.0	25.5	30.0	37.5	45.0
—gas	840	1260	1680	2100	2520	2940	3570	4200	5250	6300
Heating surface*	99	158	215	250	322	358	429	500	625	750
Net furnace volume	16.9	21.4	29.6	32.0	47.9	50.8	62.5	67.7	85.4	94.7
Safety valve capacity—steam per hour	792	1264	1720	2000	2576	2864	3432	4000	5000	6000
Outside surface to cover—unjacketed	63	90	107	121	145	158	178	197	222	252
Approximate dry weight —125 lb. W.P.	4200	5200	6400	7100	9300	9800	12100	13100	15800	18100
—150 lb. W.P.	4300	5300	6500	7200	9400	10000	13000	13400	16100	18400
Vent diameter	10	10	12	12	14	14	16	16	18	18
dimensions, inches										
A—length overall	102½	132½	137	150	163	174	158	172½	177	198½
B—width overall	54	54	60	60	66	66	73	73	79	79
C—boiler—width	48½	48½	54½	54½	60½	60½	65	65	71	71
D—length	85	115	121	134	143½	154½	139	153½	158	179½
E—inside diameter	42	42	48	48	54	54	60	60	66	66
F—steam supply height	59½	59½	65½	65½	72	72	84	84	90½	90½
G—smoke outlet height	66	66	71½	71½	77½	77½	85½	85½	91	91
H—water line height	51	51	55½	55½	60½	60½	67½	67½	71	71
J—safety valve height	65½	65½	71½	73	79½	80½	88½	88½	93½	94½
K—steam supply	27	33	35	35	36	42	37	43	44	50
L—safety valve	20	20	20	20	42	42	51	52	53	60
M—feed water	55½	79	83½	96½	83½	88½	78	85	88	98
N—blow-off	32½	32½	36½	36½	40½	40½	48	48	51	51
Q—smoke outlet location	3½	3½	4½	4½	4½	4½	4½	4½	5	5
R—smoke outlet diameter	10	10	12	12	14	14	16	16	18	18
S—steam supply size <sup>1</sup>	2	2	2	2	3	3	4	4	6	6
T—feed size	¾	¾	¾	¾	¾	¾	1¼	1¼	1½	1½
U—blow-off size	1	1	1	1	1¼	1¼	2	2	2	2
W—furnace—height	29½	29½	30½	30½	34	34	37½	37½	39	39
X—inside diameter	18	18	20	20	24	24	26¾	26¾	29¾	29¾
Y—rear chamber	18	18	21	21	24	24	24	24	26	26
Z—rear door clearance	39	39	44	44	49	49	—	—	—	—
AA—base—width	36	36	42	42	48	48	60	60	66	66
BB—floor to boiler	16	16	16	16	16	16	18	18	18	18
CC—length	86½	116½	117	130	144½	155½	140	154½	157½	179
DD—height	6	6	6	6	6	6	6	6	8	8
EE—location	11	11	15	15	18½	18½	18	18	19½	19½
FF—tube replacement space—front	41½	71	69½	82½	86	97	83	97½	98	119
GG—rear	24	53½	50	63	63½	74½	—	—	—	—
HH—burner front to boiler	17½	17½	16	16	19½	19½	19	19	19	19
KK—width—water column to CL of unit	31½	31½	34½	34½	37½	37½	41	41	44½	44½

<sup>1</sup> 2" and 3" threaded outlets. 4" and 6" 300 lb. American Standard flanges. Manhole on 60 to 150 units.  
 \* SBI heating surface on X models. ASME heating surface on others.



**NEED PARTS?**  
**OEM Boiler Parts**  
 Phone: (717) 367-9900  
[sales@oemboilerparts.com](mailto:sales@oemboilerparts.com)