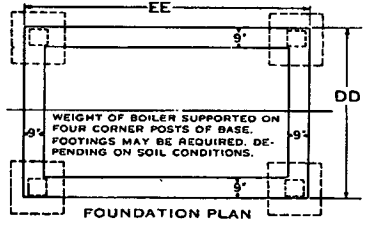
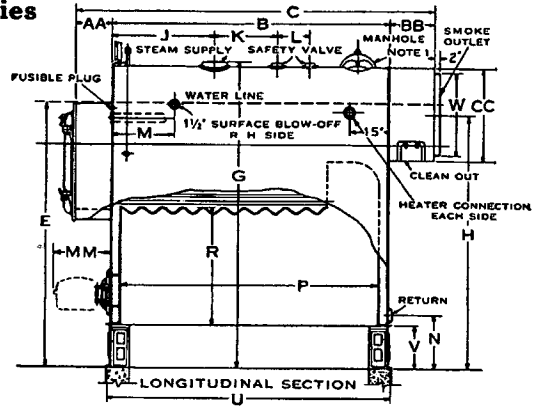
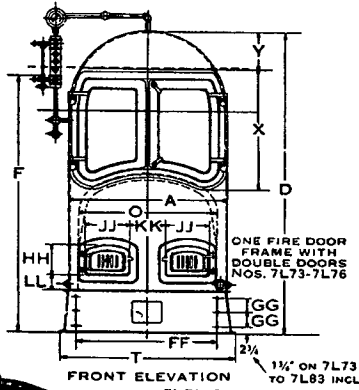
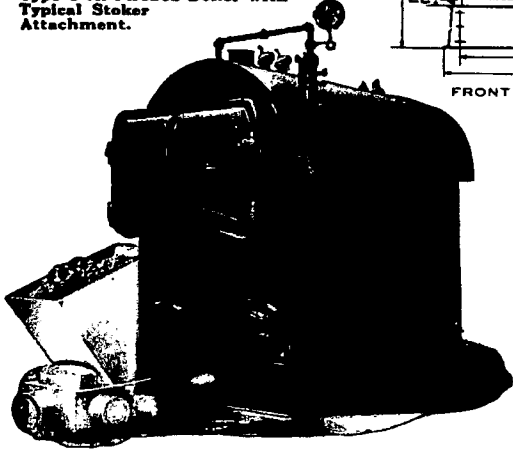


KEWANEE Type "C" Hi-Firebox Welded—7L70 Series For Oil, Gas or Stoker

The Kewanee Hi-Firebox boiler is built exactly right for stokers. This 7L70 series has long water legs providing the necessary height in firebox to comply with S.H.B.I. code for stoker firing.

Type "C" high operating efficiency insures life-long economy with any Oil, Gas or Stoker equipment. 27L70 Series Hi-Firebox is built with grates for hand-fired coal.

Type C Hi-Firebox Boiler with Typical Stoker Attachment.



7L70 Series conforms to A.S.M.E. boiler construction code for 15 lbs. and for rating with the Industry Standard Practice approved by the Steel Heating Boiler Institute in cooperation with U. S. Department of Commerce Recommendation R 157.

In the Kewanee Process of Corrugating Type "C" Crown Sheets not even the slightest reduction in metal thickness is discernible by micrometer measurements.

Note 1. Manhole furnished on boilers 7L82 and larger.

Equipment: Steel base assembled with four cast iron corner posts, heavy steel flanged panels have 8 1/2 x 11 1/2 front and rear opening; insulated flue door; and flue cleaner and handle. 7L70 "C" may be fitted at factory with Kewanee Hot Water Heating Coils at extra cost.

Trimming for steam only: Safety valve, steam gauge with syphon and cock; water column with water gauge, glass and cocks. All front smokeboxes have double doors.

Note 2. Average firebox height, computed by dividing the firebox volume by the plan area, complies with S.H.B.I. code when stoker dead plates are located at top of mud ring.

Specifications and Setting Measurements

Boiler Number	7L73	7L74	7L75	7L76	7L77	7L78	7L79	7L80	7L81	7L82	7L83	7L84	7L85	7L86	7L87	7L88	7L89	7L90
Rating—Steam Radiation	2680	3160	3650	4250	4860	5470	6080	6790	7500	8210	8920	9630	10340	11050	11760	12470	13180	13890
Water Radiation	4280	5050	5840	6800	7770	8750	9720	10660	11660	12620	13550	14450	15320	16160	17000	17800	18600	19400
Btu. per Hour	643	758	876	1020	1166	1313	1459	1606	1752	1898	2044	2190	2336	2482	2628	2774	2920	3066
Heating Surface (SHBI min.)	158	186	215	250	286	322	358	394	430	466	502	538	574	610	646	682	718	754
Furnace Volume (SHBI min.)	19.2	22.6	26.1	30.4	34.8	39.1	43.5	47.8	52.1	56.5	60.8	65.2	69.5	73.9	78.2	82.6	86.9	91.3
Average Firebox Height, See Note 2	33.9	33.0	32.3	31.4	34.5	34.0	34.0	37.8	37.2	42.7	42.4	46.5	48.5	52.4	54.7	58.2	63.5	66.8
Firebox Vol. above Mud Ring	25.5	28.3	31.1	36.1	45.8	50.8	56.0	73.5	85.2	100.5	117.4	145.4	184.5	203.7	243.4	321.6	357.2	437.0
Plan Area	9.1	10.3	11.5	13.8	15.9	17.9	19.8	23.4	27.5	28.2	33.3	37.5	45.7	46.7	53.4	66.3	67.5	78.5
Breaching Diameter	19	19	19	19	22	22	24	24	24	28	28	30	31	35	35	39	41	43
Stack Diameter	15	16	16	17	18	19	20	21	22	24	26	28	29	31	33	36	38	40
Stack Height	35	35	40	45	40	45	50	50	60	55	65	65	70	65	75	90	80	100
Breaching Diameter, Two Boilers	23	24	24	25	26	27	28	30	31	34	36	40	41	44	47	50	54	56
Stack Diameter, Two Boilers	21	22	22	23	24	25	26	28	29	32	34	37	38	41	44	47	50	52
Stack Height, Two Boilers	45	45	50	55	50	55	60	60	70	65	75	75	80	75	85	100	90	110
Steam Supply Size	6	6	6	6	6	6	6	8	8	8	8	8	8	8	8	10	10	10
Return Size	3	3	3	3	3	3	3	4	4	4	4	4	4	4	4	6	6	6
Water Heater Connection Size	2	2	2	2	2	2	2	3	3	3	3	3	3	3	3	3	3	3
Safety Valve Size	1 1/2	2	2	2	2	2	2 1/2	2 1/2	2 1/2	3	3	3	3	3	3	3	3	3
Shipping Weight	3100	3500	3900	4400	4900	5400	5800	6700	7600	8800	10000	11800	13600	15300	17000	20100	23200	26100
A—Boiler Width	36	36	36	36	42	42	42	48	48	54	54	60	66	72	72	78	84	84
B—Boiler Length	4-2	4-8	5-2	6-0 1/2	5-10 1/2	6-6 1/2	7-2 1/2	7-2 1/2	8-5	8-5	8-11 1/2	9-2 1/2	9-11 1/2	9-3 1/2	10-6 1/2	11-11 1/2	11-4 1/2	13-1 1/2
C—Boiler Length Overall	5-10 1/2	6-4 1/2	6-10 1/2	7-5 1/2	7-10 1/2	8-6 1/2	9-2 1/2	9-2 1/2	10-7	9-11	11-2 1/2	11-6 1/2	12-3 1/2	12-1 1/2	13-4 1/2	14-9 1/2	14-2 1/2	15-11 1/2
D—Boiler Height Overall	82 1/2	82 1/2	82 1/2	82 1/2	88 1/2	88 1/2	88 1/2	94 1/2	94 1/2	108	108	119 1/2	123	131	134	140	157	161
E—Water Line Height	74	74	74	74	77	77	77	81	81	94	94	105	106	114	117	121	136	140
F—Water Column Height	70 1/2	70 1/2	70 1/2	70 1/2	73	73	73	78	78	90	90	101	103	110 1/2	113 1/2	117 1/2	132 1/2	136 1/2
G—Steam Supply Height	84 1/2	84 1/2	84 1/2	84 1/2	90 1/2	90 1/2	90 1/2	96 1/2	96 1/2	110	110	121 1/2	125	133	136	142	159	163
H—Smoke Outlet Hgt. above Floor	69 1/2	69 1/2	69 1/2	69 1/2	74	74	74	78	78	90 1/2	90 1/2	101 1/2	104	109	112	117	132	136
J—Steam Supply Location	10 1/2	14	14	16	14	16	18	18	18	18	21	21	21	21	21	21	21	24
K—Safety Valve Location	8 1/2	10	10	10	10	10	11	14	14	13	14	14	14	14	14	14	14	15
L—Second Safety Valve Location																		
M—Surface Blow-Off Location	12	12	12	12	12	12	12	12	12	18	24	24	24	24	24	24	24	24
N—Return Height	18	18	18	18	18	18	18	18	18	18	18	18	18	18	18	18	18	18
O—Firebox Width	30	30	30	30	36	36	36	42	42	47 1/2	47 1/2	52 1/2	58 1/2	65	65	70	76	76
P—Firebox Length	43 1/2	49 1/2	55 1/2	66	64	72	79 1/2	80	94 1/2	85 1/2	101	103	112	104	119	136	128 1/2	149 1/2
R—Firebox Height	31	31	31	31	34	34	34	38	38	43	43	47	49	53	56	60	64	68
T—Base Width	41 1/2	41 1/2	41 1/2	41 1/2	47 1/2	47 1/2	47 1/2	53 1/2	53 1/2	59 1/2	59 1/2	66	72	78	78	84	90 1/2	90 1/2
U—Base Length	52	58	64	74 1/2	72 1/2	80 1/2	88	88 1/2	103	94	109 1/2	113	122	114	129	146	139	160
V—Base Height	14	14	14	14	14	14	14	14	14	14	14	17	17	17	17	17	17	21
W—Smoke Outlet Diameter	19	19	19	19	22	22	22	24	24	28	28	30	31	35	35	39	41	43
X—Front Smokebox Height	34	34	34	34	34	34	34	35	35	42	42	48	48	51	51	52	61	61
Y—Fr. Smokebox Top to Boiler Top	10	10	10	10	13	13	13	14	14	16	16	16	16	17	17	19	21	21
AA—Front Smokebox Depth	9	9	9	9	10	10	10	11	11	12	12	12	12	14	14	14	14	14
BB—Rear Smokebox Depth	11 1/2	11 1/2	11 1/2	11 1/2	14	14	14	15	15	15	15	15	16	16	20	20	20	20
CC—Rear Smokebox Height	26	26	26	26	29	29	29	31 1/2	31 1/2	35	35	36	39	43	43	45 1/2	49 1/2	49 1/2
DD—Foundation Width	48	48	48	48	54	54	54	60	60	65 1/2	65 1/2	70 1/2	76 1/2	83	83	88	94	94
EE—Foundation Length	53 1/2	59 1/2	65 1/2	76	74	82	90	90	104 1/2	96	111	114 1/2	123 1/2	115 1/2	130 1/2	147 1/2	140 1/2	161 1/2
FF—Bolt Centers in Front Plate	31 1/2	31 1/2	31 1/2	31 1/2	37 1/2	37 1/2	37 1/2	43 1/2	43 1/2	49 1/2	49 1/2	55 1/2	61 1/2	67 1/2	67 1/2	73 1/2	79 1/2	79 1/2
GG—Bolt Centers in Front Plate	4 1/2	4 1/2	4 1/2	4 1/2	4 1/2	4 1/2	4 1/2	4 1/2	4 1/2	4 1/2	4 1/2	4 1/2	4 1/2	4 1/2	4 1/2	4 1/2	4 1/2	4 1/2
HH—Firedoor Height	13 1/2	13 1/2	13 1/2	13 1/2	15	15	15	16	16	17	17	17	17	17	17	17	17	17
JJ—Firedoor Width	27 1/2	27 1/2	27 1/2	27 1/2	27 1/2	27 1/2	27 1/2	27 1/2	27 1/2	27 1/2	27 1/2	27 1/2	27 1/2	27 1/2	27 1/2	27 1/2	27 1/2	27 1/2
KK—Space Between Firedoors	5	5	5	5	5	5	5	5	5	5	5	5	5	5	5	5	5	5
LL—Hgt. Doors from Bottom Blr.	9 1/2	9 1/2	9 1/2	9 1/2	9 1/2	9 1/2	9 1/2	9 1/2	9 1/2	9 1/2	9 1/2	9 1/2	9 1/2	9 1/2	9 1/2	9 1/2	9 1/2	9 1/2
MM—Open Firedoor to Boiler	20	20	20	20	20 1/2	20 1/2	20 1/2	22 1/2	22 1/2	22 1/2	22 1/2	26 1/2	26 1/2	26 1/2	26 1/2	29 1/2	29 1/2	29 1/2
*Outside Surface to Cover	79	85	93	104	116	125	134	152	170	192	215	245	277	291	327	385	415	463

*Front smokebox and front head below smokebox IS included.



NEED PARTS?
OEM Boiler Parts
Phone: (717) 367-9900
sales@oemboilerparts.com